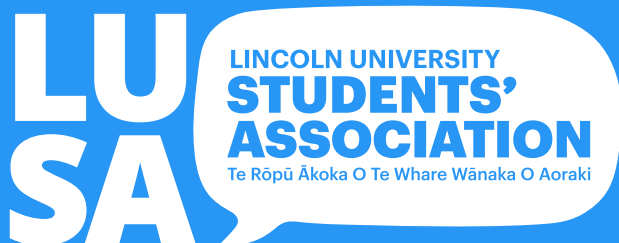


**Lincoln University  
Students' Association**

# **Strategic Plan**

**2026–2030**



# Who is LUSA?

The Lincoln University Students' Association (LUSA) is an organisation independent to Lincoln University. We represent the common and collective concerns of our students and provide a voice for them both within and outside of the university.

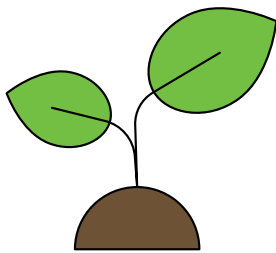
Vision:

**That Lincoln University students will have the best student experience possible.**

Mission:

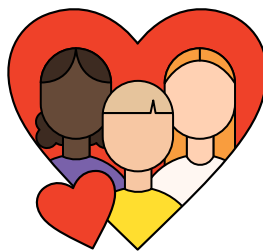
**To ensure a quality student experience for everyone through representation, support services, advocacy, and engagement.**

## Our Values



### **Sustainability**

We ensure LUSA's future through environmental, financial, social, and cultural responsibility.



### **Inclusivity**

Everything we do seeks to foster a welcoming, friendly, and safe environment.



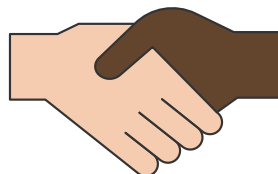
### **Diversity**

We embrace and celebrate the diversity of our students and enable them to be an integral part of the student experience.



### **Student Centred**

Students are at the heart of everything we do.



### **Integrity**

We act in the best interests of students through transparent and honest communication.

### Strategic Goal 1:

## Facilitate strong student voice

Enhance the student representative system to facilitate an effective feedback loop between students and staff.

Facilitate contested and spirited LUSA executive elections with an annually increasing number of candidates and voters by making students aware of what the LUSA executive do, making the roles attractive, and increasing candidate and voter engagement.

Maintain current student representation on university committees and pursue other opportunities for the student voice to be heard within and outside of Lincoln University.

### Strategic Goal 2:

## Promote a safe, supportive, and inclusive environment

Actively engage with underrepresented student groups through advocacy pathways, student clubs, and promotion of inclusive events.

Ensuring our support services and engagement are meeting the needs of students through support and harm reduction approaches.

Advocating for a safe and equitable environment that is free from racism, discrimination, bullying, and harassment.

### Strategic Goal 3:

## Build a bicultural campus

Acknowledge and act in accordance with Te Tiriti o Waitangi and recognise Te Awhioraki as equal partners in representing students at Lincoln University.

Acknowledge Mana Whenua and raise student awareness around the cultural narrative of Lincoln University and the whenua it sits on.

Support and enable Te Awhioraki to achieve their long-term objectives through support and access to all of LUSA services and resources.

### Strategic Goal 4:

## Celebrate diversity

Recognise and celebrate diverse events and activities throughout the world.

Increase engagement, support, and access to resources for all Equity, Diversity, and Inclusion (EDI) clubs and communities, such as international, rainbow, and disability.

Support and resource clubs to organise at least one event, initiative, or activity every year that provides opportunity for student engagement.

### Strategic Goal 5:

## Enhance engagement with the student body

Tailor engagement pathways to ensure all student groups are represented equitably.

Proactively engage and build awareness of LUSA services by maintaining media and communication channels that are current, accessible, and engaging, to understand students' needs.

Foster an environment that actively promotes and supports the physical, mental, emotional, spiritual health and wellbeing of all students.

---

### Strategic Goal 6:

## Cultivate sustainability

Make strong governance and operational decisions to maintain and diversify the financial position of LUSA.

Adhere to LUSA policies including the Environmental Sustainability Policy to ensure we minimise our environmental footprint.

Foster social sustainability at Lincoln University by developing and implementing initiatives that prioritise student wellbeing for generations to come.

---

### Strategic Goal 7:

## Increase transparency and accountability

Ensure LUSA remains transparent by making accounts, documentation and other financial information accessible for all students.

Ensure LUSA's services, including student support and advocacy, is actively promoted and communicated to all students and reviewed and reported on regularly in relation to this strategic plan

Ensure continual enhancement of student awareness of how LUSA is held accountable and how they can be a part of LUSA's accountability to the student body.

